

Digital Portfolio: Kong Ho's Student Work

(20 selected Foundations-Level Artworks:
Drawings, paintings, graphic designs,
digital art and photographs)





Still-life by Andy Braeger in Painting 1. 2009. Acrylic on canvas, 16"H x 20"W.



My Best Friend by Savannah Schena in Painting 1. 2009. Acrylic on canvas, 16"H x 20"W.



Still-life by Jill Moore in Drawing I. 2009. Charcoal on paper, 24"H x 18"W.



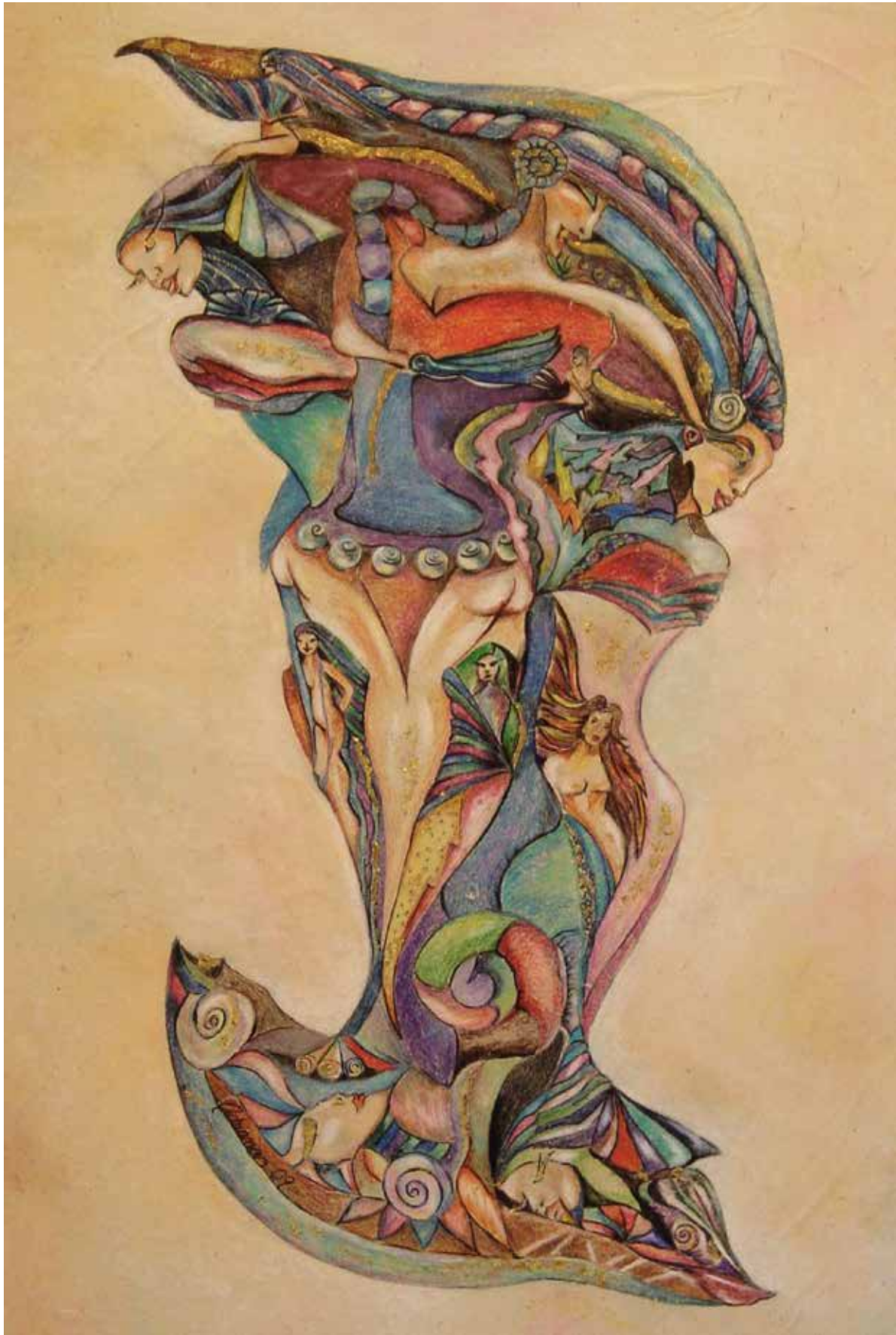
Still-life by Ryan Race in Drawing 1. 2010. Pastels on paper, 24"H x 18"W.



Abstract Figures by Amber O'Brien in Advanced Drawing. 2009. Pastels on paper, 24"H x 18"W.



Nude Figure by Samila Sosic in Advanced Painting. 2010. Acrylic on canvas, 30"H x 24"W.



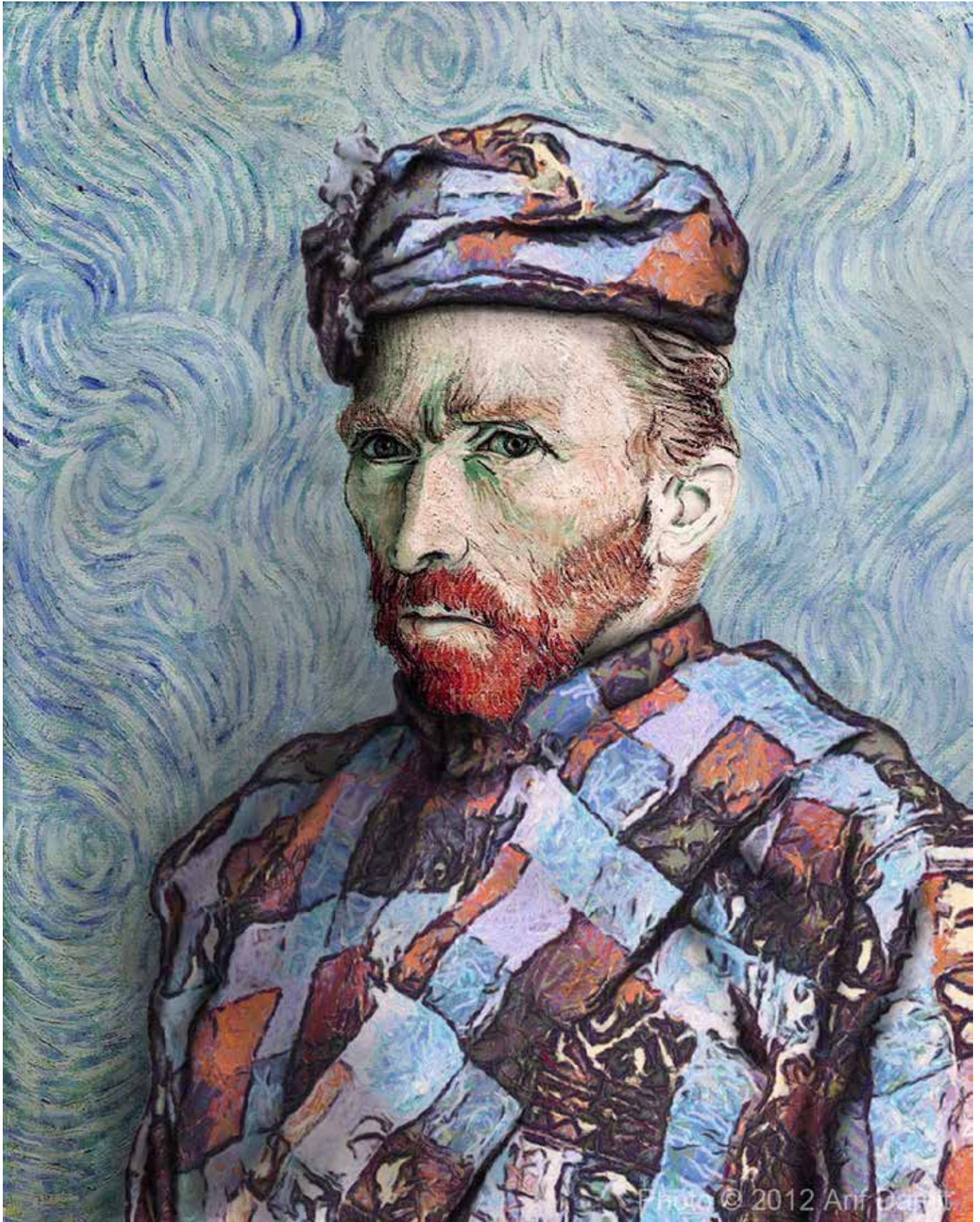
Abstract Figures by Adriana Sabrino in Advanced Drawing. 2011. Pastels on paper, 24"H x 18"W.



Abstract Figures by Samila Susic in Advanced Drawing. 2011. Pastels on paper, 24"H x 18"W.



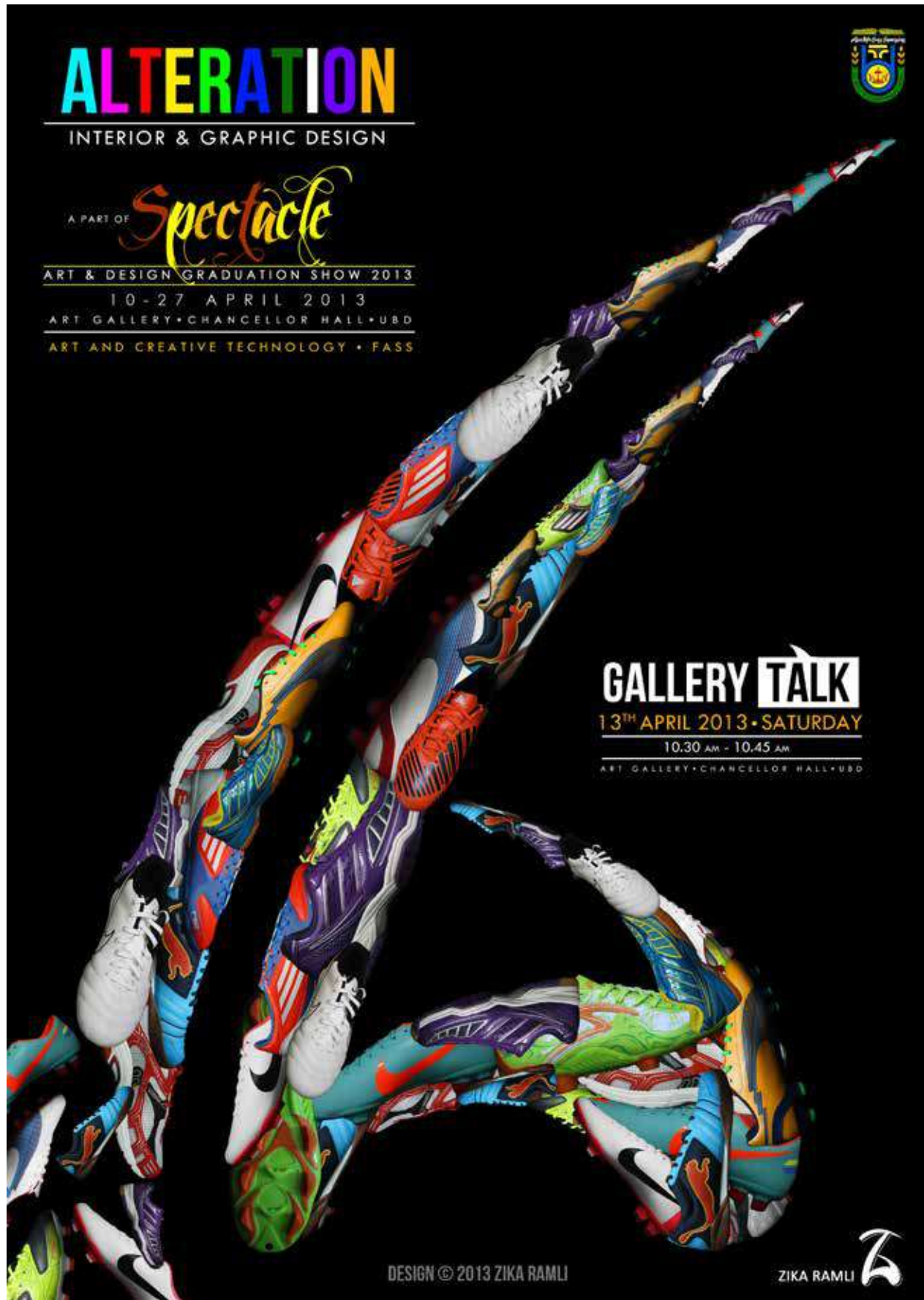
Waterfall by Ryan Race in Painting 1. 2010. Acrylic on canvas, 30"H x 24"W.



Altered Vincent van Gogh by Airul Damit in Digital Photography & Videography. 2012. Digital print, 10"H x 8"W.

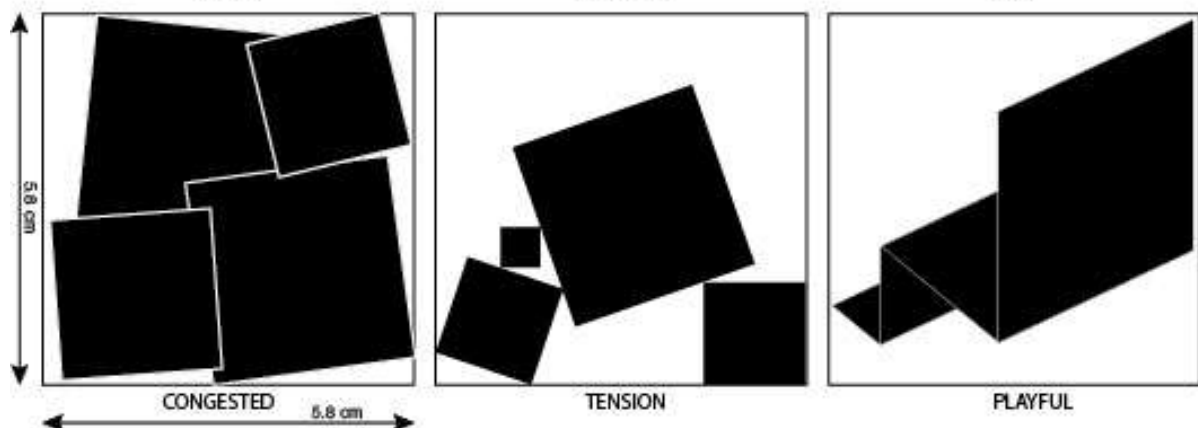
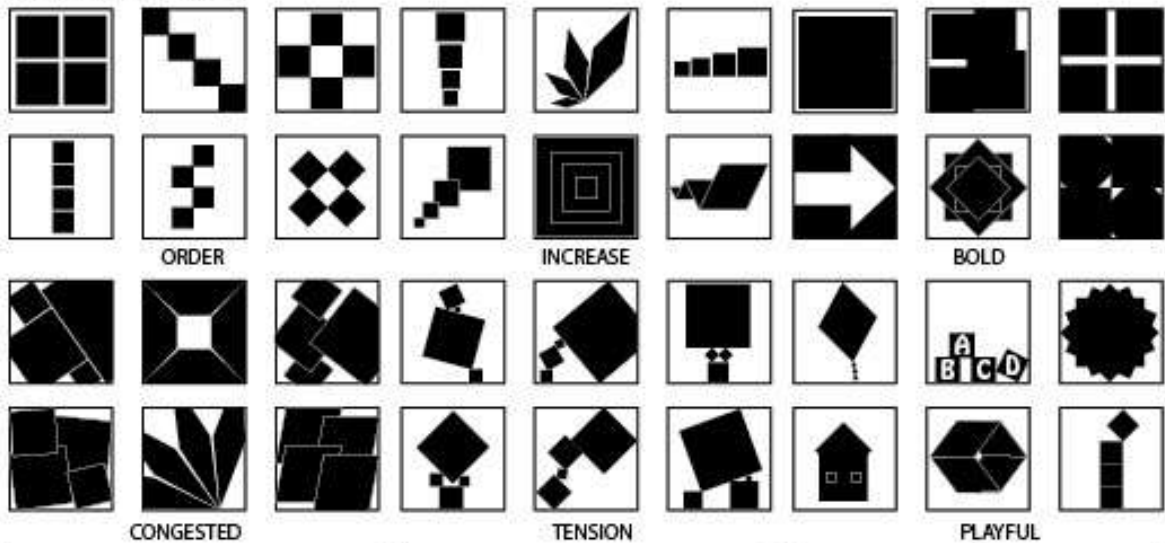


Moon in a Jar by Amal Daud in Digital Photography & Videography. 2016. Digital print, 10"H x 8"W.



Alteration by Haziqah Rambli in Capstone Project. 2013. Poster design, 23.3"H x 16.5"W.

Black Square Problem : By using four black squares, create a graphic image that best expresses the meaning of each of the following six words (see below). Make six preliminary layouts for each word in the areas indicated. Then select the most effective solution and execute it in the larger designed area. Using only four squares is a seemingly limited palette to express such diverse words, yet these squares can be expanded into a more comprehensive language by utilizing various design principles.



Design © Ijjoji Nordin 2011

DESIGNING WITH TYPE PROBLEM

Using only letterforms, create six typographic designs in the areas indicated on the assignment sheet. The essence of each design is to be created using only the designated typefaces. Use a minimum of two letterforms and as many colors as your concept dictates (except for the negative-positive problem, for which only black and white is required). Copy and enlarge the best design to 21.2 cm x 14.1 cm and paste onto the worksheet, "Type_Bai"



Typeface 1,
Problem: Scale



Typeface 2,
Problem: Negative/Positive



Typeface 3,
Problem: Pattern



Typeface 4,
Problem: Congestion



Typeface 5,
Problem: Tension



Typeface 6,
Problem: Playful

Design © 2011 Aqilah HJ Morshidi

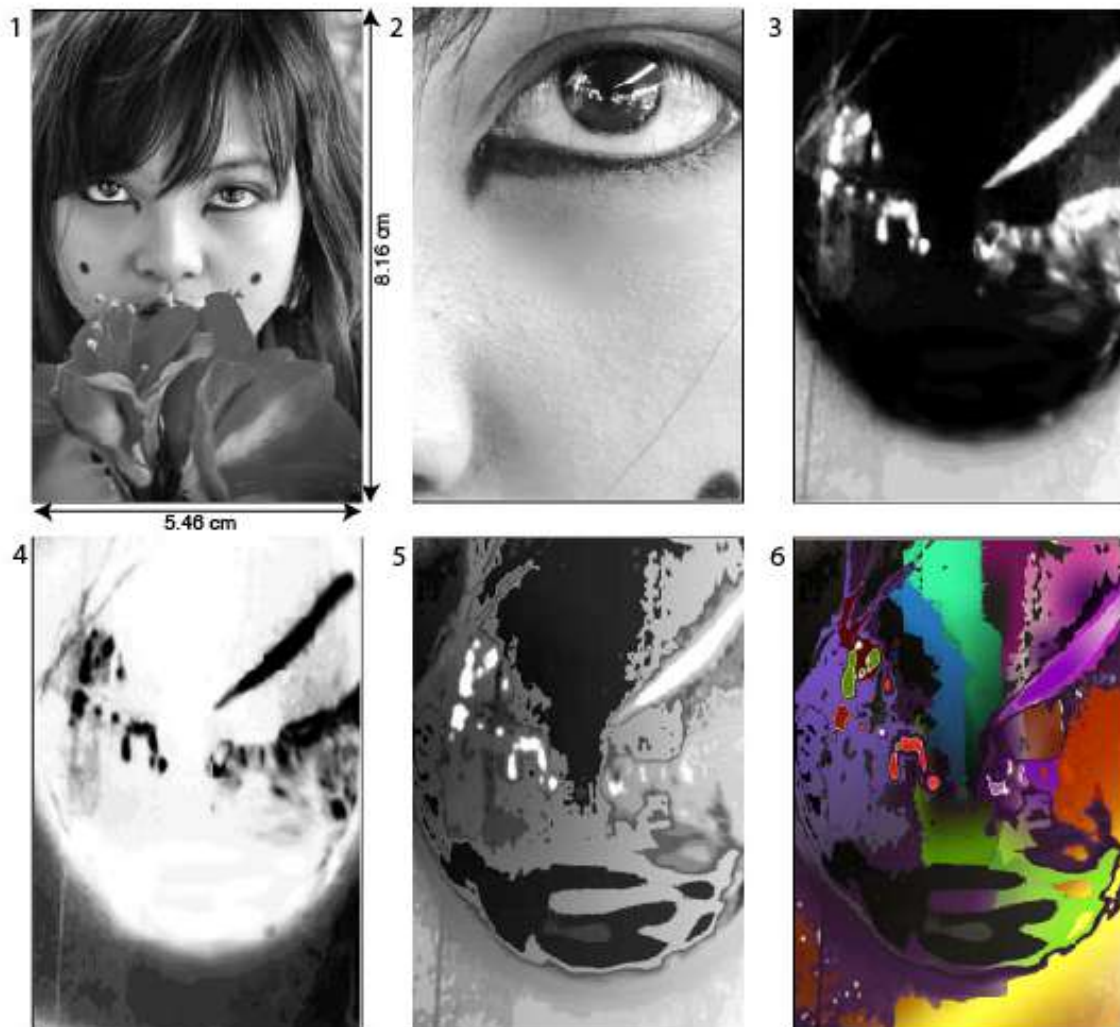


Limitless Imagination by Nuriskandar Hasnan in Capstone Project. 2013. Poster design, 23.3"H x 16.5"W.

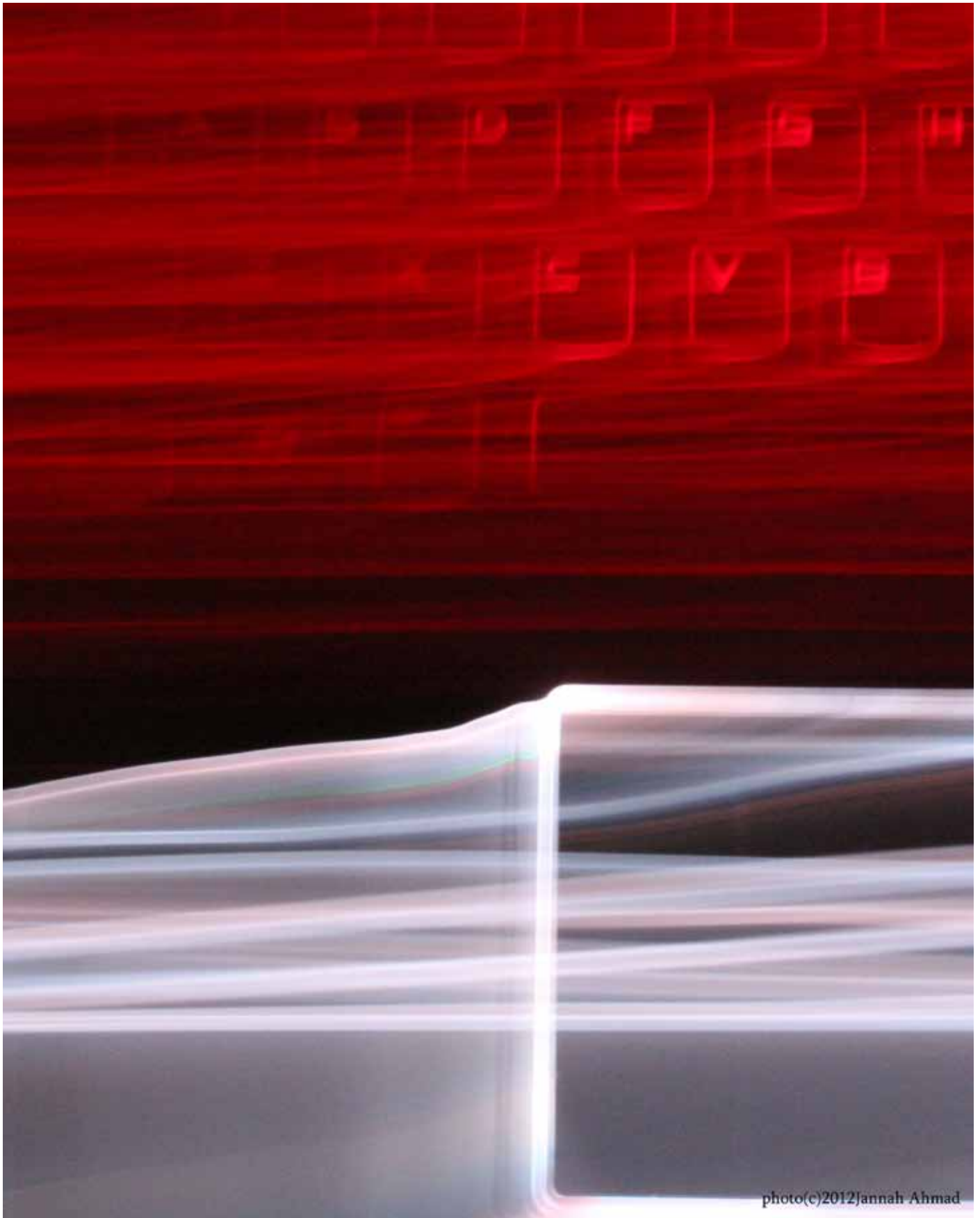
Less Is More Problem: Suggesting an image, rather than directly depicting it, is the graphic counterpart of Ludwig Mies van der Rohe's idea, less is more. This reductive approach is a powerful technique that a graphic designer can employ, inviting the viewing audience to interact with the artwork by mentally completing the implied image. This problem is a six-part assignment taking the designer through various stages useful in creating such an image. The six parts of the problem are to be executed as follows.

LESS IS MORE

1. In keeping with the less-is-more idea, choose one of your portrait photo, and design it in its entirety by simplifying its physical characteristics into black and white images with the help of Grayscale command in the Photoshop CS4.
2. Enlarge and crop the original design you created for step 1, but retain its readability.
3. Drastically enlarge and crop the design you created for step 1, to the point where recognizability is no longer a factor - abstract shapes are the main concern. Then apply the Posterize command to your cropped image.
4. Choosing the design from step 3, execute the chosen design in reverse-field with the help of Invert command - all black areas become white, all white areas become black, for both subject and background.
5. Choosing the design from step 3, execute the chosen design using black and white plus some grey tones.
6. Execute the last design in full value of color including black and white. Then copy and enlarge step 6 to 22cm x 14.8cm via Image Size command in the Photoshop CS4, and paste onto the worksheet "Less-Is-More_B.ai"



Less is More by Susannah Sitai Liew in Graphic Design. 2011. Digital print, 11"H x 8"W.



photo(c)2012Jannah Ahmad

Movement by Jannah Ahmad in Digital Photography & Videography. 2012. Digital print, 10"H x 8"W.

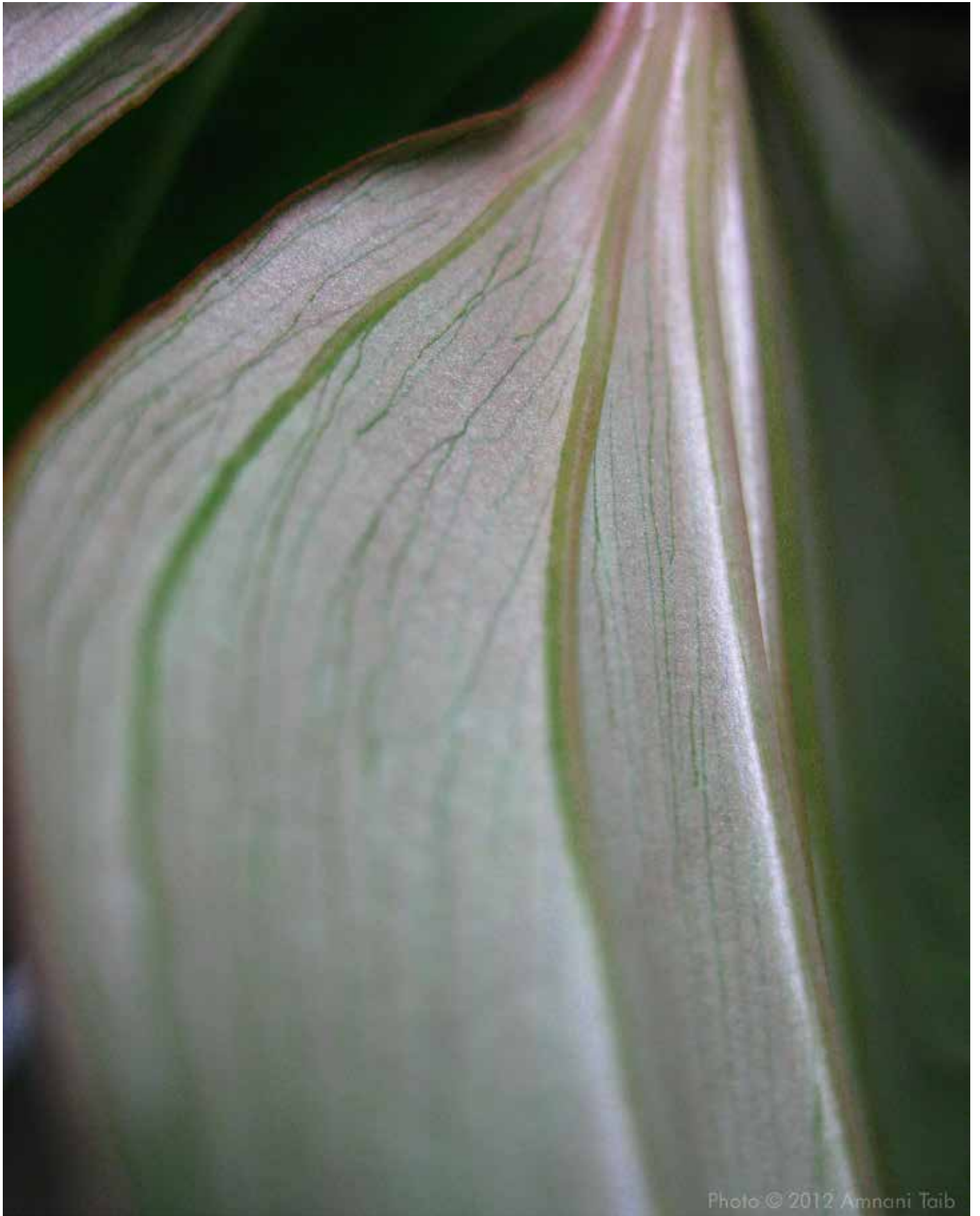


Photo © 2012 Amnani Taib

Texture by Amnani Taib in Digital Photography & Videography. 2012. Digital print, 10"H x 8"W.



Choose one subject matter, like apple, frog, starfish, etc., with a unique and distinguished form, or from art, like Leonardo da Vinci's *Mona Lisa*, and visually interpret it 25 different ways. As you work, carefully consider the language of graphic design including cropping, touching, overlapping, and intersecting of forms, negative and positive relationships, composition, texture, scale, frame of reference, illusory space, and color, and the various graphic design principles, like unity and variety. Select what you consider your best solution and copy plus enlarge to 19.9 cm x 13.3 cm and paste onto the worksheet, "25+1_B.ai". Consider all techniques and approaches in solving this problem. There are no limitations on the use of color or media.



Design © Ijjoji Nordin 2011

25 + 1 Problem by Ijjoji Nordin in Graphic Design. 2011. Digital print, 11"H x 8"W.



Imaginarium by Nurul Suzanina Zainal Arshad in Capstone Project. 2015. Poster design, 23.3"H x 16.5"W.